

SHEERWATER REGENERATION MEDIUM RISE

HEATING & DOMESTIC WATER

Incoming mains cold water pipework (MCWS) to serve bulk storage tank on ground level and serve commercial areas directly.

Boosted Cold Water (BCWS) to be supplied from bulk storage to each apartment.

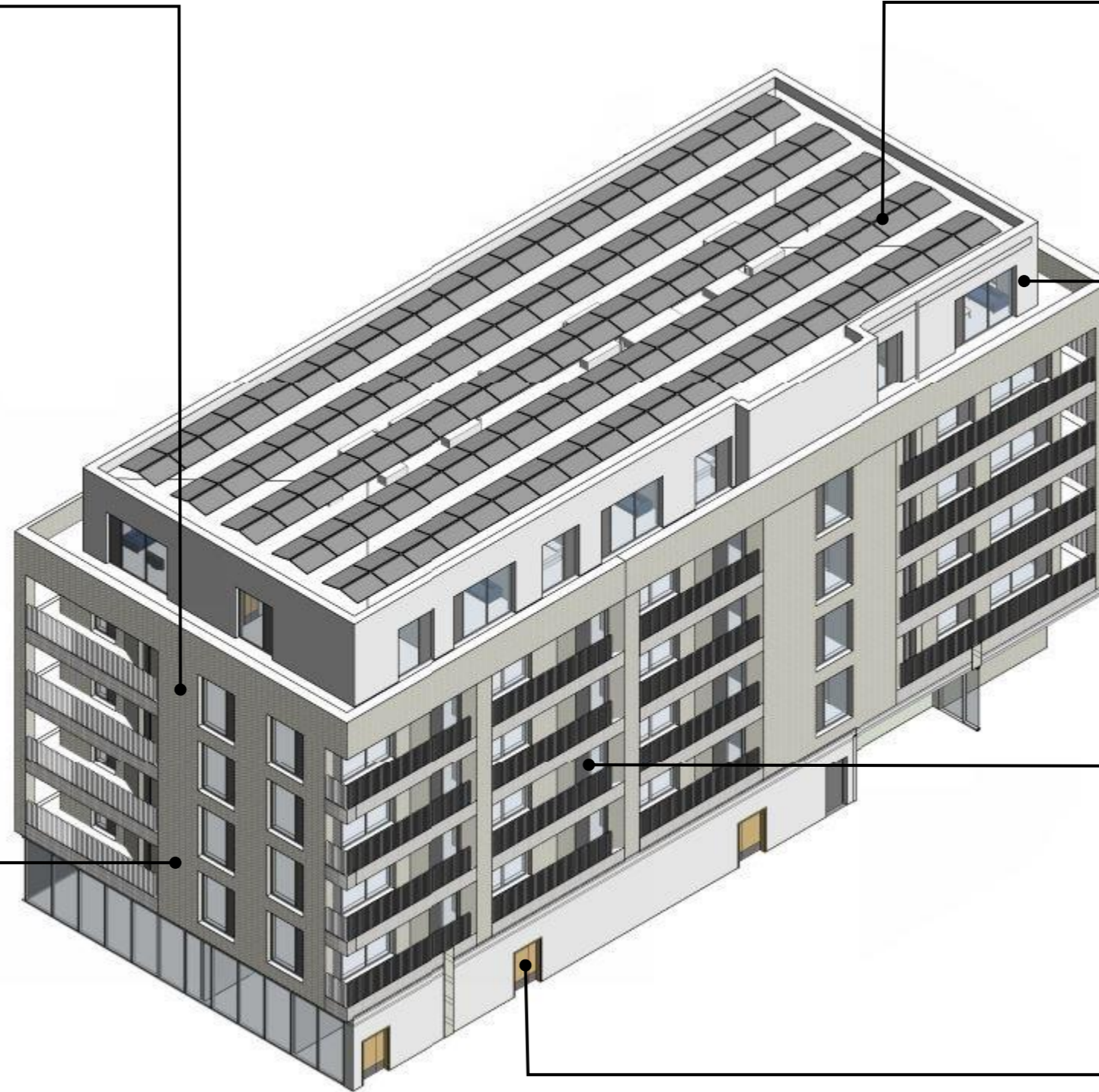
Incoming district heating from external network to serve each apartment Heat Interface Unit (HIU) located within each utility cupboard. HIUs are to serve each apartment with hot water (HWS) and heating in the form of underfloor heating.

SERVICES DISTRIBUTION

Services will be distributed from plant and switch rooms through risers and suspended ceilings in communal areas.

Utility cupboards are to be provided for each apartment, located adjacent to the apartment they serve and with access provided onto the communal corridor.

-  GAS
-  WATER
-  ELECTRICITY
-  SUSTAINABILITY
-  HEATING
-  VENTILATION
-  STREETLIGHTING



PV PANELS

Photovoltaic Cells mounted on the roof will provide clean and sustainable energy to the energy centre and retail units.

VENTILATION

Ventilation to apartments to be provided via vertical, wall mounted MVHR units situated within the utility cupboard. Extract to be provided to bathrooms, kitchens and utility rooms, air to be supplied to living rooms and bedrooms. Ventilation terminations to be provided on the façade above windows for intake and exhaust vent.

Concealed, horizontal MVHRs to be provided to communal areas with louvres at high level on the façade.

ELECTRICAL DISTRIBUTION

Low voltage circuits from the dwelling's Mains Consumer Unit (MCU) will be distributed throughout the apartments to serve light fittings, white goods and equipment.

INCOMING UTILITIES

Incoming utilities serving each apartment and landlord areas will be connected off the site-wide infrastructure for the development.